

Air Lift Maintenance

To keep a lift system running optimally requires preventative maintenance. The following areas need inspected at regular intervals. Conduct these inspections and make the adjustments and repairs to ensure your system runs trouble free preventing expensive downtime. Add all of the following tasks to your preventative maintenance schedule.

Illustration	Softrol Part Number	File Reference
Illustration 6	QR-GTLAC-J007-L015	ILL06_QR-GTLAC-J007-L015.pdf
Illustration 7	QR-GTLCICRH48LHA	ILL07_QR-GTLCICRH48LHA.pdf
Illustration 8	ASOLS-SY7340-5DZ-03-ASSY	ILL08_ASOLS-SY7340-5DZ-03-ASSY.pdf

Air Lift Operation

Air lift operation is achieved by a controlled actuator in a relay box mounted on the lift frame. This controls the air flow to the cylinder for directional activation.

To maintain the operation, air flow needs to be regulated and consistent. The air regulators are set by Softrol installers at the time of commission. Changing the regulation will affect the incline and decline speed of the lift.

Air Lift Preventative Maintenance

See Illustration 6

Monthly

Lifting Cylinder	Keep free of lint and debris.
Cylinder Rod	Inspect for scratches and the cylinder rod seal for damage
Cylinder Rod Seal	Inspect for damage
Cylinder Shaft	Clean with a clean lint free cloth and wipe in the direction of travel. Compressed air can be used to remove lint and dust but supplied air must be filtered.

Every Three Months

Air Fittings	Inspect air fittings at cylinder for leakage.
Supplied Air Lines	Inspect for wear, rubbing or cracking. If any wear or air leakage occurs, repair immediately. Before removing any air lines, lift carriage must be at its lowest point. Verify the carriage is resting on the lower stops or the cylinder is at its bottom of travel. Bleed off air in closed system and remove faulty component i.e. airline, fitting. Replacement parts are available from Softrol Parts Department at 888-SOFTROL (888-763-8765) extension 110. Softrol recommends replacing all components at this time to minimize down time.

Air Lift Cylinder Connections

See Illustration 7

Every Six Months

Clevis Connecting Hardware Inspect for tightness and wear. Both upper and lower connections should be inspected.

Switches Clean and inspect roller limit switches and optical location switches for debris and operation.

Compressed filtered air or lint free cloth may be used to remove dust and lint.

Refer to carriage maintenance section for rail alignment and additional maintenance requirements.

Center Position Closed Valve

See Illustration 8

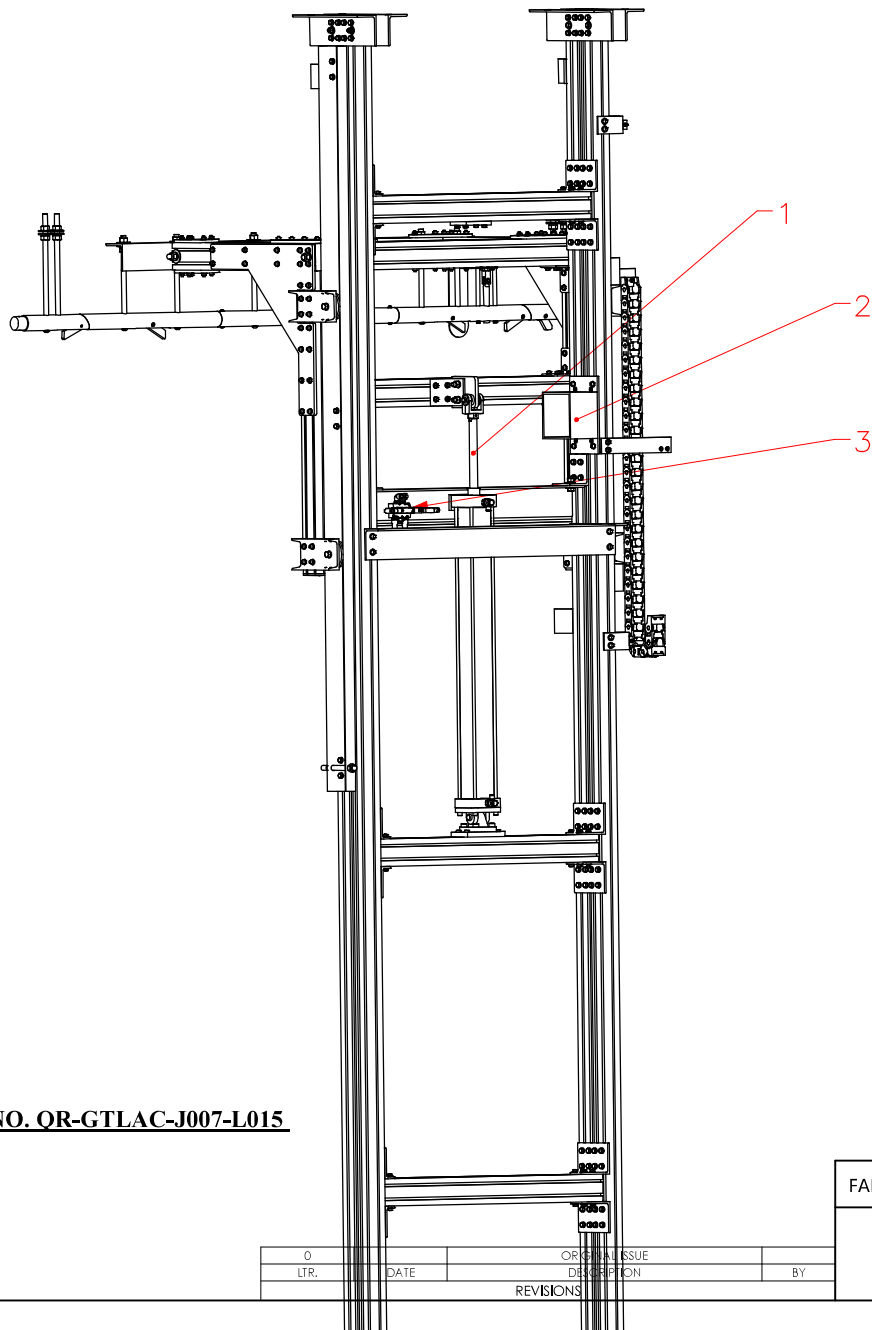
Every Six Months

Air Lines and Fittings Inspect air lines and fittings of the center position closed valve.

Wire Connections Inspect for wear or chafing. Replace worn or defective parts.

Mounting Screws Inspect for tightness.

Debris Remove any debris.



ITEM	DESCRIPTION
1	AIR CYLINDER SHAFT
2	RELAY CONTROL
3	SOLENIOD VALVE

ILLUSTRATION 6

PART NO. QR-GTLAC-J007-L015

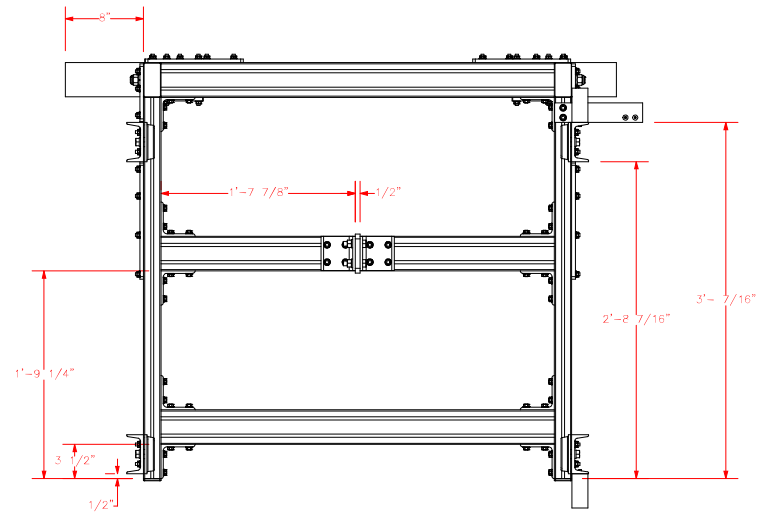
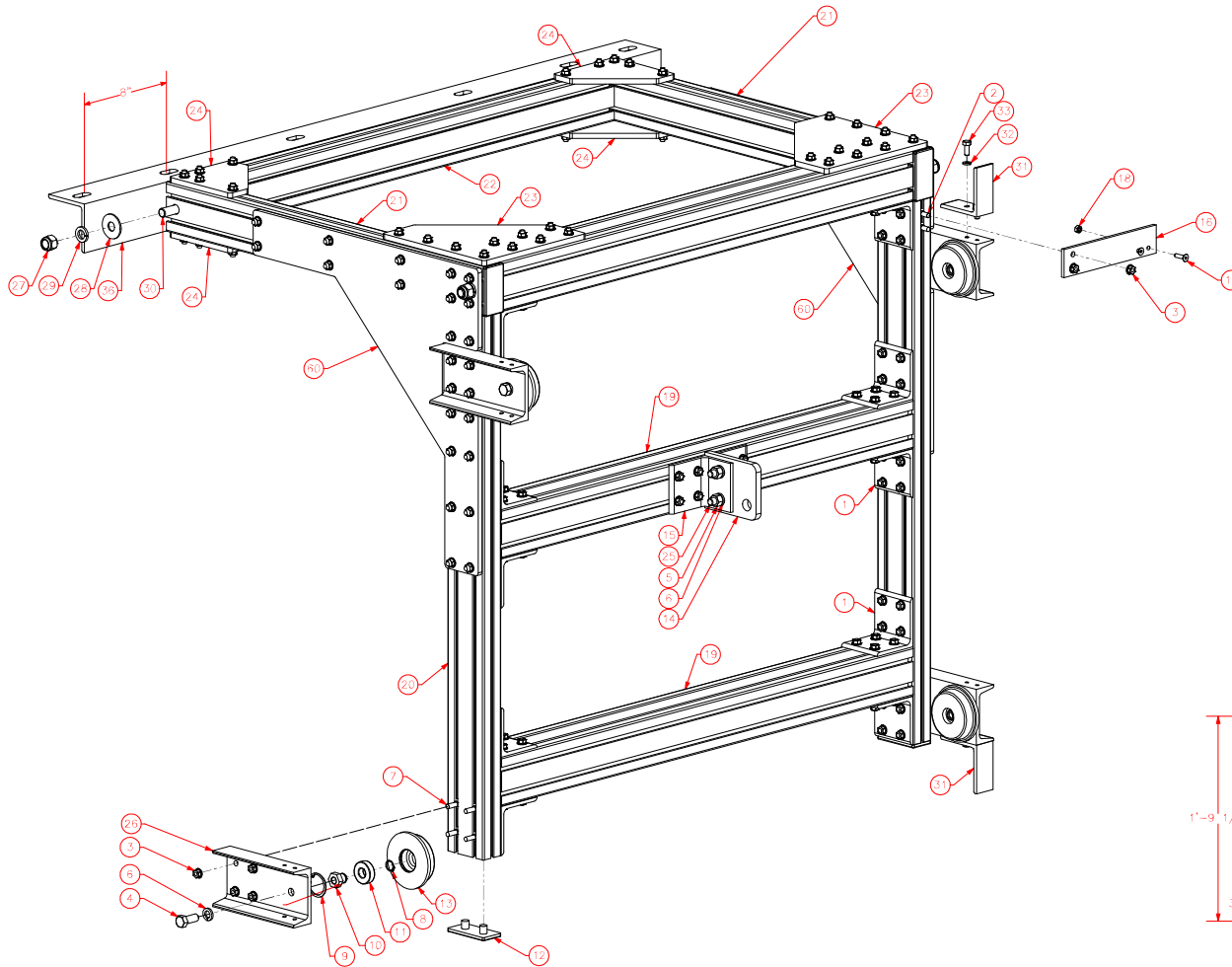
Q	DATE	DESCRIPTION	BY

FABRICATION TOLERANCES
 UNLESS NOTED
 FRACTIONS $\pm 1/32"$
 DECIMAL $\pm 0.005"$
 ANGULAR $\pm 1/2^\circ$

Softrol Systems, Inc. Reserves all proprietary rights to this drawing and all data shown hereon is CONFIDENTIAL and can not be used without prior written consent of Softrol Systems, Inc.	DRAWN/DESIGNED	DATE	SOFTROL 1100 NORTHPOINT PKWY, ACWORTH, GA.30102 PHONE: 770-974-2700 FAX: 770-974-0435
	DLC	04-21-16	
	MACHINE SHOP	DATE	TITLE
	---	---	ILLUSTRATION 6
PRODUCTION	DATE	SIZE	PART NO / FILE NAME
---	---	B	QR-GTLAC-J007-L015
ENGINEERING	DATE	SCALE	REV
---	---	1:12	A
			SHEET 1

ITEM	DESCRIPTION
5	CARRIAGE MOUNTING BOLT
6	CARRIAGE MOUNTING NUT
14	CLEVIS CONNECTION PLATE
15	CARRIAGE CONNECTION CLIP
31	UPPER / LOWER SW-TRIGGER

ILLUSTRATION 7



REV	DATE	DESCRIPTION	BY	CHKD

FABRICATION TOLERANCES	
UNLESS NOTED	
FRACTIONS ±1/32"	
DECIMAL ±0.005"	
ANGULAR ±1/2°	

DESIGNED BY	TMT	DATE	02-19-16
DRAWN BY			
CHECKED BY			
APPROVED BY			
PROJECT NO.			
REV			
SOFTROL 1100 UNIVERSITY DRIVE • HOUSTON, TX 77058 PHONE: (281) 261-1100 FAX: (281) 261-1101			
PART NO. D QR-GTLCR48LHA-SLDRV			REV. 11
PAGE 2			OF 3

ITEM	DESCRIPTION
1	AIR TO CYLINDER
2	AIR TO CYLINDER
3	CONTROL WIRE
4	MUFFLER
5	AIR SUPPLY

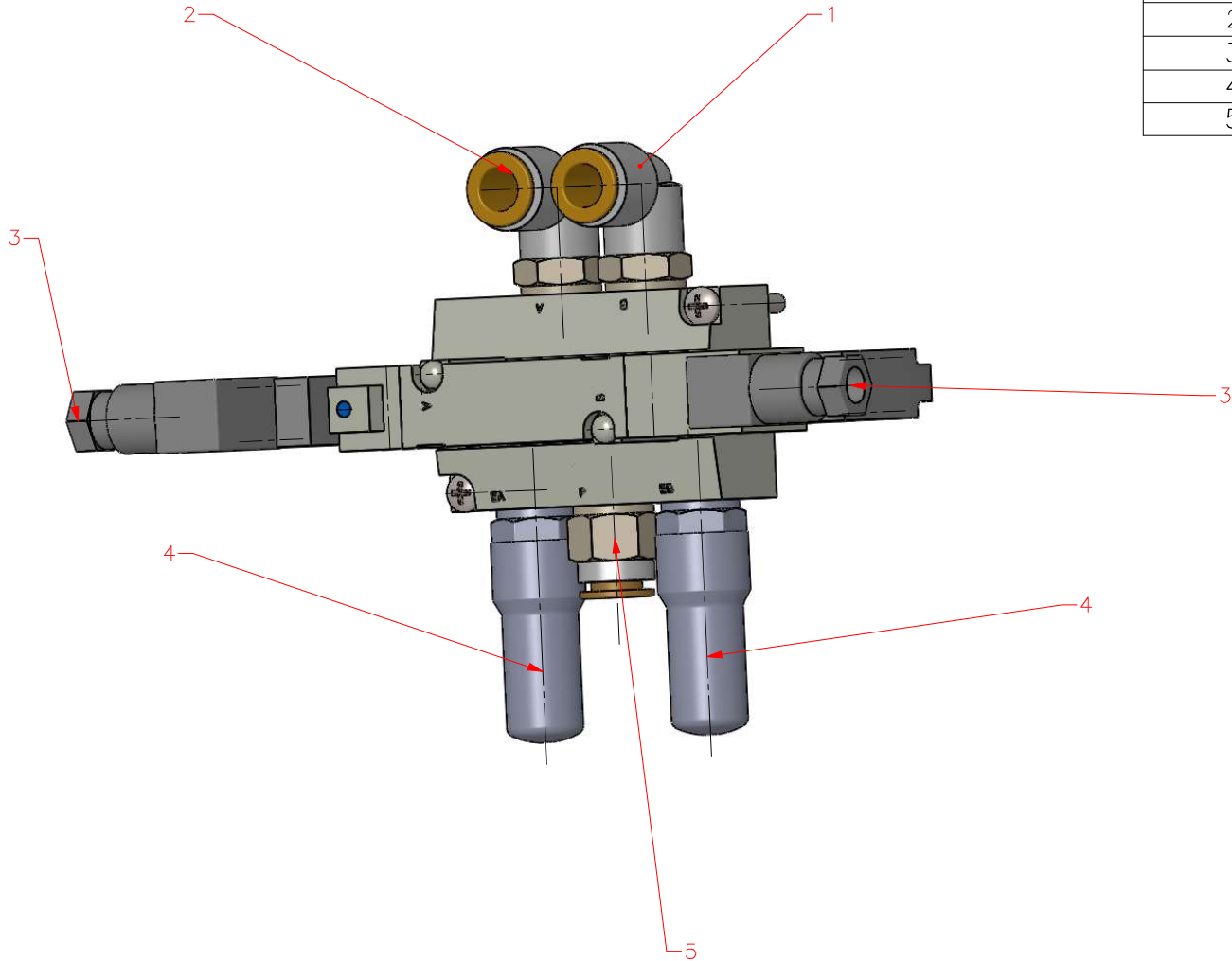


ILLUSTRATION 8

PART NO. ASOLS-SY7340-5DZ-03T-ASSY

O	DATE	DESCRIPTION	BY
		ORIGINAL ISSUE	
		REVISIONS	

FABRICATION TOLERANCES
 UNLESS NOTED
 FRACTIONS $\pm 1/32"$
 DECIMAL $\pm 0.005"$
 ANGULAR $\pm 1/2^\circ$

Softrol Systems, Inc. Reserves all proprietary rights to this drawing and all data shown hereon is CONFIDENTIAL and can not be used without prior written consent of Softrol Systems, Inc.

DRAWN/DESIGNED	DATE
DLC	04-21-16
MACHINE SHOP	----
PRODUCTION	----
ENGINEERING	----

SOFTROL	
<small>1100 NORTHPOINT PKWY, ACWORTH, GA, 30102 PHONE: 770-974-2700 FAX: 770-974-0435</small>	
TITLE: ILLUSTRATION 8	
SIZE: B	PART NO / FILE NAME: ASOLS-SY7340-5DZ-03T-ASSY
SCALE: 1:1	SHEET: 1